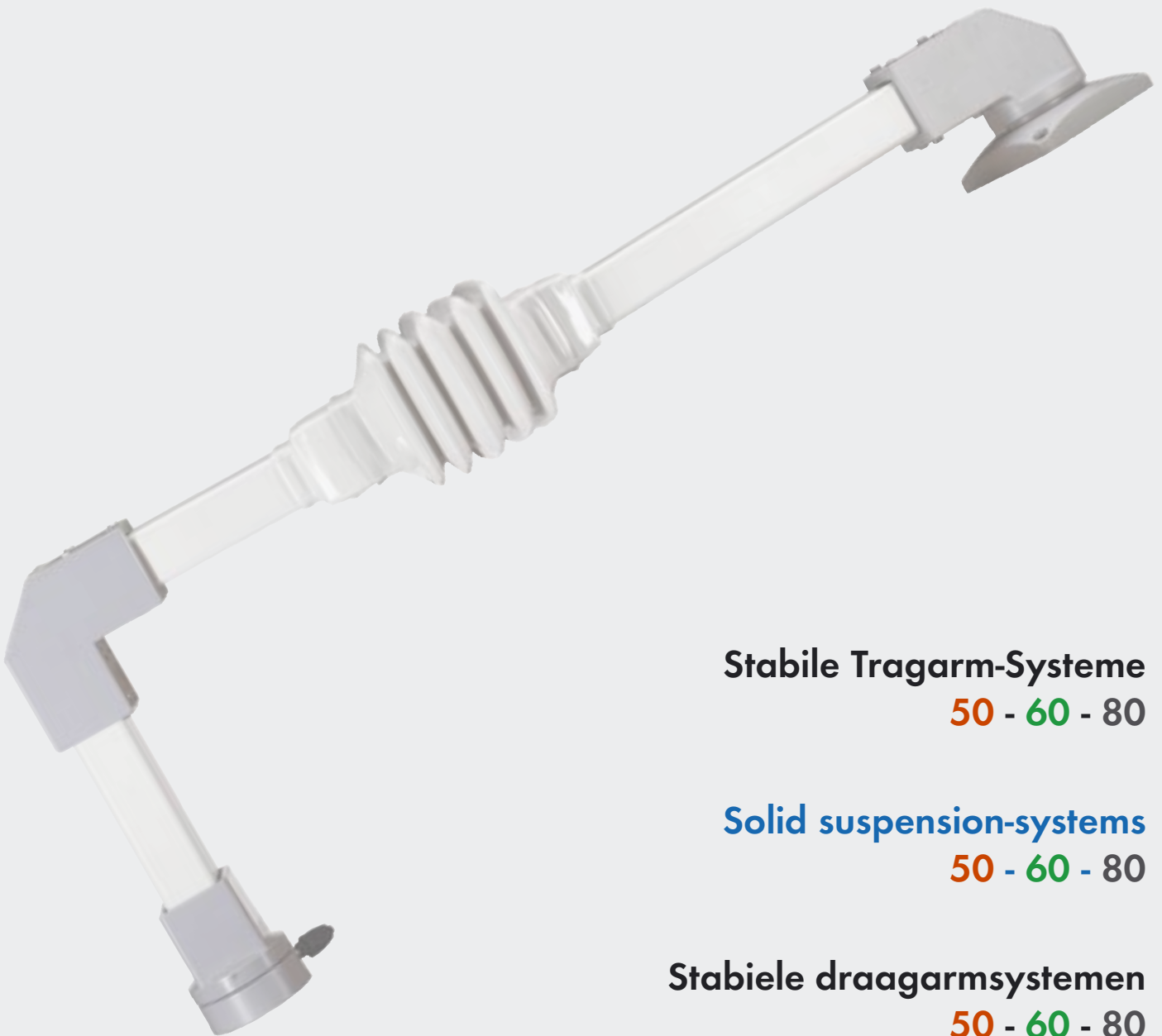


QUADRO



Stabile Tragarm-Systeme

50 - 60 - 80

Solid suspension-systems

50 - 60 - 80

Stabiele draagarmsystemen

50 - 60 - 80

TECHNISCHE DATEN
QUADRO 50-60-80

Material

Gehäusekupplung/Winkelkupplung/Winkel 50+80 aus Aluminiumguß. Alle anderen Teile aus hochfestem Sphäroguß.

Lackierung

Systemelemente:
Standard-Pulverbeschichtung RAL 7040 fenstergrau.
Strukturack eingebrannt und Sonderfarben auf Wunsch.
Verbindungsrohre:
Standard-Pulverbeschichtung RAL 7035 lichtgrau.
Strukturack eingebrannt und Sonderfarben auf Wunsch.
Faltenbälge:
Ähnlich RAL 7035 lichtgrau.

Schutzart

IP 54 / EN 60529

Kabelführung

Innenliegend geschützt.

Anzugsdrehmoment

für Schneidringsschrauben
30 Nm = 3 kg/m

TECHNICAL DATA
QUADRO 50-60-80

Material

Enclosure coupling/elbow coupling/elbow 50+80 made of die-cast aluminium. All other parts made of spheroidal.

Coating

Systemelements:
Standard powder coated RAL 7040 window grey.
Stove-finished structure oaint and special colours on request.
Coating connecting tubes:
Standard powder coated RAL 7035 light grey.
Fold protective coverings:
Similar to RAL 7035 light grey.

Ingress protection

IP 54 / EN 60529

Cable routing

Internal and protected.

Torque

for self cutting screws
30 Nm = 3 kg/m

TECHNISCHE GEGEVENS
QUADRO 50-60-80

Materiaal

Behuizingsverbinding/hoekverbinding/hoek 50+80 van gietaluminium. Alle andere onderdelen van hoogvast gietijzer met bolvormig grafiet.

Lak

Systemelementen:
Als standaard gemoffeld.
RAL 7040 donkergrijs.
Gemoffelde structuurlak en speciale kleuren op aanvraag.
Verbindingsbuizen:
Als standaard gemoffeld.
RAL 7035 lichtgrijs.
Gemoffelde structuurlak en speciale kleuren op aanvraag.
Vouwbalgen:
Als RAL 7035 lichtgrijs.

Beschermklasse

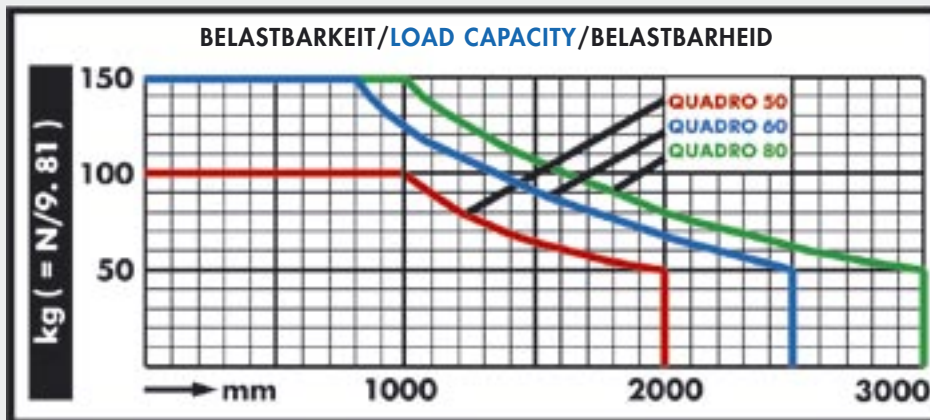
IP 54 / EN 60529

Kabelgeleiding

Binnenliggend en beschermd.

Aandraaimoment

voor zelftappende schroeven
30 Nm = 3 kg/m



- 1 3 individuelle Gehäuse-Tragarmsysteme
- 2 Tragarmsystem für mittlere und schwere Belastungen
- 3 Hochbelastbare Systemteile aus Sphäroguß
- 4 Problemlose Ausrichtung der Systeme

- 1 3 individual enclosure suspension systems
- 2 Suspension systems for medium and heavy load capacity
- 3 High load capacity as system parts are made of spheroidal
- 4 Problem-free adjustment of the systems

- 1 3 Individuele draagarmsystemen voor behuizingen
- 2 Draagarmsysteem voor middelmatig zware en zware belastingen
- 3 Uiterst belastbare systeemonderdelen van hoogvast gietijzer met bolvormig grafiet
- 4 Probleemloze afstelling van het systeem

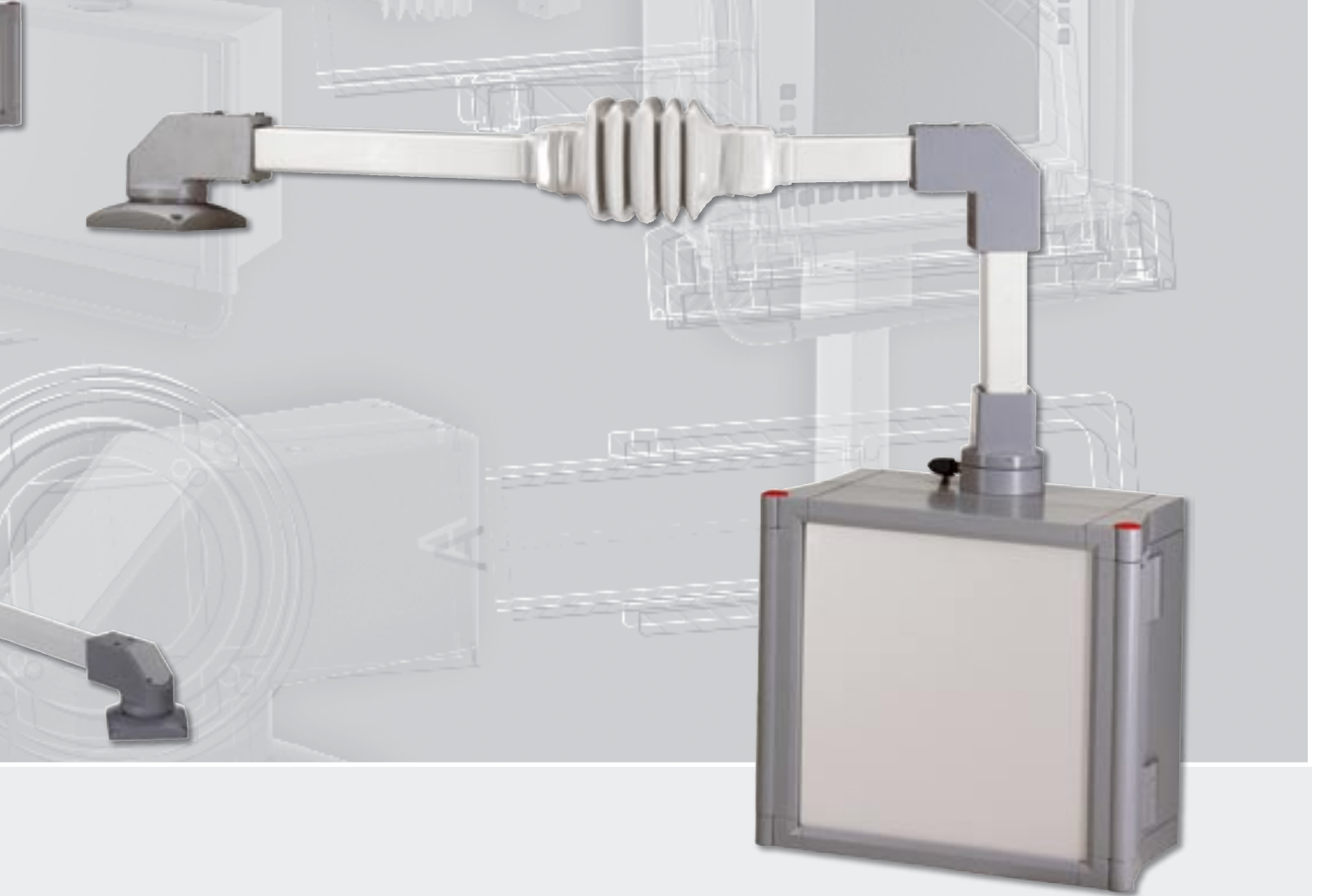
QUADRO

Tragarm-System
Suspension-system
Draagarmsysteem

50-60-80



..protects.



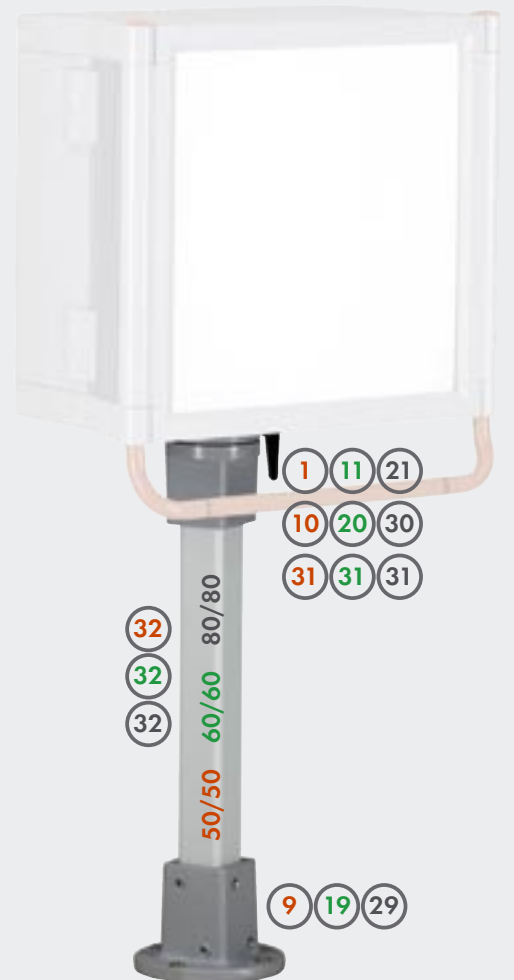
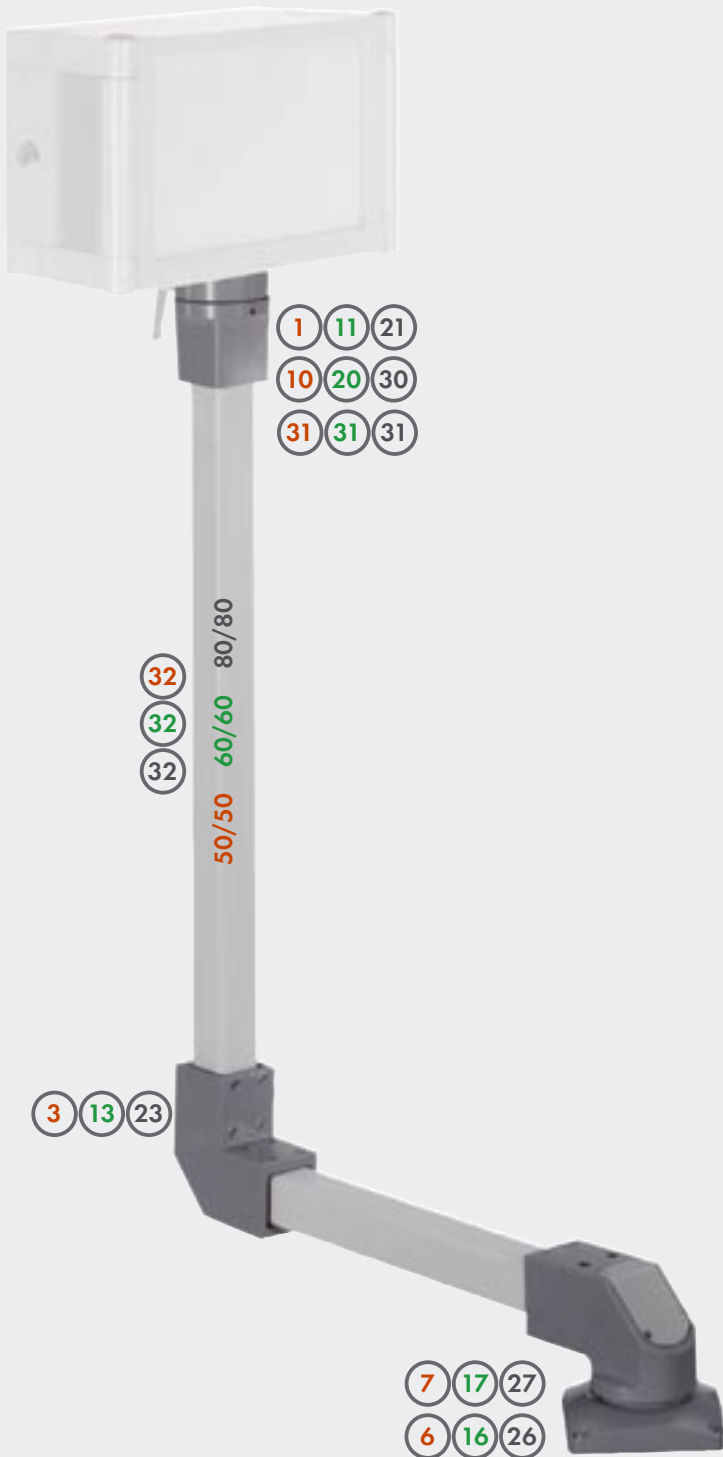
Systemelemente/System elements/Systemelementen

QUADRO 50	QUADRO 60	QUADRO 80	Typ Type Type			Material Material Materiaal	
Mat.-Nr.	Mat.-Nr.	Mat.-Nr.					
1	11	21	147.025.500	147.025.100	147.025.700	Kupplung Coupling Koppeling	Al
2	12	22	147.035.500	147.035.100	147.035.700	Winkelkupplung Elbow coupling Hoekkoppeling	Al
3	13	23	147.020.500	147.020.100	147.020.700	Winkel Elbow Hoek	Al
4		24	147.020.501		147.020.701	Kontrollleuchtenadapter Control lamp adapter Controlelampadapter	Al
5	15	25	147.015.000	147.015.100	147.015.200	Zwischengelenk Intermediate joint Tussenscharnier	GGG
6	16	26	147.010.000	147.010.100	147.010.200	Wandgelenk Wall joint Wandscharnier	GGG
7	17	27	147.005.500	147.005.100	147.005.700	Aufsatzgelenk Socket joint Opzetscharnier	GGG
8			147.040.000			Aufsteckgelenk Tube rotation joint Opsteekscharnier	GGG
9	19	29	147.030.000	147.030.100	147.030.200	Standfuß Base Standvoet	GGG
10	20	30	147.025.002	147.025.102	147.025.202	Neigungskupplung DN Inclination coupling DN Inclinatiekoppeling DN	Al/PA
31	31	31	140.045.000	140.045.000	140.045.000	Neigungsadapter 30°/60° Inclination adapter 30°/60° Inclinatieadapter 30°/60°	Al
32	32	32	144.020.500	144.030.500	144.040.500	Vierkantrohr 0,50 m Square tube, 0,50 m Vierkante buis	Fe
32	32	32	144.021.000	144.031.000	144.041.000	Vierkantrohr 1,00 m Square tube, 1,00 m Vierkante buis	Fe
32	32	32	144.021.500	144.031.500	144.041.500	Vierkantrohr 1,50 m Square tube, 1,50 m Vierkante buis	Fe
32	32	32	144.022.000	144.032.000	144.042.000	Vierkantrohr 2,00 m Square tube, 2,00 m Vierkante buis	Fe

▲
Abbildung Nr. auf den folgende Seiten - Picture nr. on following pages - Afbeeldingnr. op de volgende pagina's



Varianten von QUADRO
 Variations of QUADRO
 Varianten van de QUADRO



Systemelemente/System elements/Systeemelementen

QUADRO 50 Mat.-Nr.		Typ Type Type			Material Material Materiaal	g g g
1	147.025.500	Kupplung	Coupling	Koppeling	Al	1.250
2	147.035.500	Winkelkupplung	Elbow coupling	Hoekkoppeling	Al	2.000
3	147.020.500	Winkel	Elbow	Hoek	Al	1.350
4	147.020.501	Kontrollleuchtenadapter	Control lamp adapter	Controlelampadapter	Al	25
5	147.015.000	Zwischengelenk	Intermediate joint	Tussenscharnier	GGG	4.250
6	147.010.000	Wandgelenk	Wall joint	Wandscharnier	GGG	4.350
7	147.005.500	Aufsatzgelenk	Socket joint	Opzetscharnier	GGG	5.400
8	147.040.000	Aufsteckgelenk	Tube rotation joint	Opsteekscharnier	GGG	6.650
9	147.030.000	Standfuß	Base	Standvoet	GGG	3.250
10	147.025.002	Neigungskupplung DN	Inclination coupling DN	Inclinatiekoppeling DN	Al/PA	3.000
31	140.045.000	Neigungsadapter 30°/60°	Inclination adapter 30°/60°	Inclinatieadapter 30°/60°	Al	1.100
32	144.020.500	Vierkantrrohr 0,50 m	Square tube, 0,50 m	Vierkante buis 0,50 m	Fe	3.375
32	144.021.000	Vierkantrrohr 1,00 m	Square tube, 1,00 m	Vierkante buis 1,00 m	Fe	6.750
32	144.021.500	Vierkantrrohr 1,50 m	Square tube, 1,50 m	Vierkante buis 1,50 m	Fe	10.125
32	144.022.000	Vierkantrrohr 2,00 m	Square tube, 2,00 m	Vierkante buis 2,00 m	Fe	13.500

QUADRO 60 Mat.-Nr.		Typ Type Type			Material Material Materiaal	g g g
11	147.025.100	Kupplung	Coupling	Koppeling	Al	2.150
12	147.035.100	Winkelkupplung	Elbow coupling	Hoekkoppeling	Al/GGG	3.850
13	147.020.100	Winkel	Elbow	Hoek	Al/GGG	3.850
15	147.015.100	Zwischengelenk	Intermediate joint	Tussenscharnier	GGG	5.550
16	147.010.100	Wandgelenk	Wall joint	Wandscharnier	GGG	5.700
17	147.005.100	Aufsatzgelenk	Socket joint	Opzetscharnier	GGG	9.300
19	147.030.100	Standfuß	Base	Standvoet	GGG	3.750
20	147.025.102	Neigungskupplung DN	Inclination coupling DN	Inclinatiekoppeling DN	Al/PA	2.900
31	140.045.000	Neigungsadapter 30°/60°	Inclination adapter 30°/60°	Inclinatieadapter 30°/60°	Al	1.100
32	144.030.500	Vierkantrrohr 0,50 m	Square tube, 0,50 m	Vierkante buis 0,50 m	Fe	3.375
32	144.031.000	Vierkantrrohr 1,00 m	Square tube, 1,00 m	Vierkante buis 1,00 m	Fe	6.750
32	144.031.500	Vierkantrrohr 1,50 m	Square tube, 1,50 m	Vierkante buis 1,50 m	Fe	10.125
32	144.032.000	Vierkantrrohr 2,00 m	Square tube, 2,00 m	Vierkante buis 2,00 m	Fe	13.500

QUADRO 80 Mat.-Nr.		Typ Type Type			Material Material Materiaal	g g g
21	147.025.700	Kupplung	Coupling	Koppeling	Al	3.100
22	147.035.700	Winkelkupplung	Elbow coupling	Hoekkoppeling	Al	6.550
23	147.020.700	Winkel	Elbow	Hoek	Al	2.400
24	147.020.701	Kontrollleuchtenadapter	Control lamp adapter	Controlelampadapter	Al	80
25	147.015.200	Zwischengelenk	Intermediate joint	Tussenscharnier	GGG	10.000
26	147.010.200	Wandgelenk	Wall joint	Wandscharnier	GGG	9.450
27	147.005.700	Aufsatzgelenk	Socket joint	Opzetscharnier	GGG	15.700
29	147.030.200	Standfuß	Base	Standvoet	GGG	7.000
30	147.025.202	Neigungskupplung DN	Inclination coupling DN	Inclinatiekoppeling DN	Al/PA	2.900
31	140.045.000	Neigungsadapter 30°/60°	Inclination adapter 30°/60°	Inclinatieadapter 30°/60°	Al	1.100
32	144.040.500	Vierkantrrohr 0,50 m	Square tube, 0,50 m	Vierkante buis 0,50 m	Fe	3.375
32	144.041.000	Vierkantrrohr 1,00 m	Square tube, 1,00 m	Vierkante buis 1,00 m	Fe	6.750
32	144.041.500	Vierkantrrohr 1,50 m	Square tube, 1,50 m	Vierkante buis 1,50 m	Fe	10.125
32	144.042.000	Vierkantrrohr 2,00 m	Square tube, 2,00 m	Vierkante buis 2,00 m	Fe	13.500

▲ Abbildung Nr. auf den folgende Seiten - Picture nr. on following pages - Afbeeldingnr. op de volgende pagina's

QUADRO



www.rolec.de

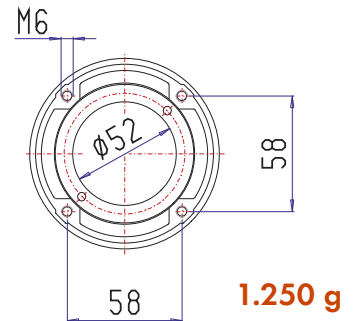
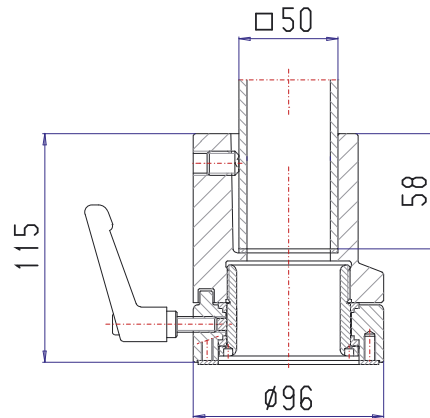
Tragarm-System
Suspension-system
Dragarmsysteem

Gehäusekupplung
Enclosure coupling
Behuizingskoppeling

QUADRO 50



300°



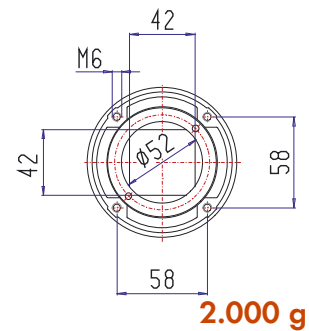
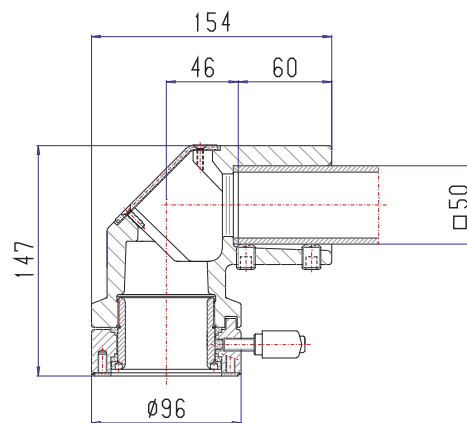
1.250 g

Winkelkupplung
Elbow coupling
Hoekkoppeling

QUADRO 50



300°



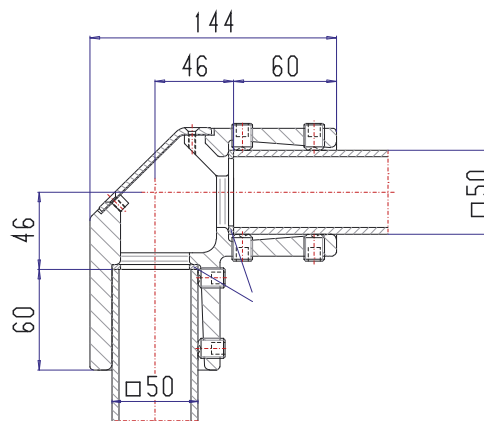
2.000 g

Winkel
Elbow
Hoek

QUADRO 50



3



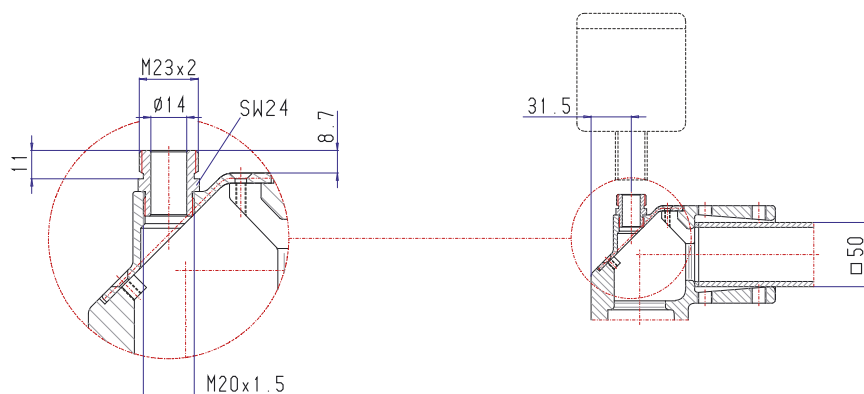
1.350 g

Kontrollleuchtenadapter
Control lamp adapter
Controlelampadapter

QUADRO 50



4



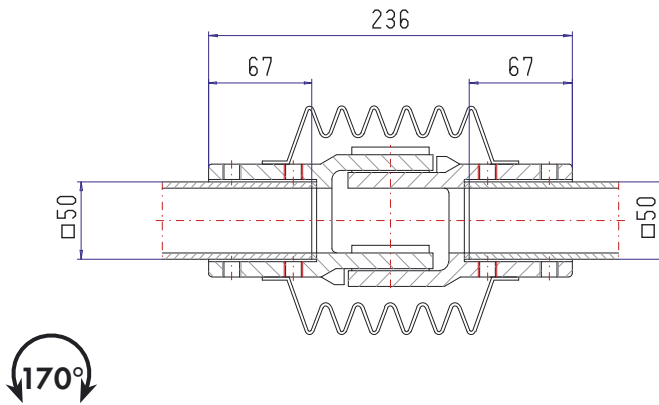
25 g



www.rolec.de

Zwischengelenk
Intermediate joint
Tussenscharnier

QUADRO 50

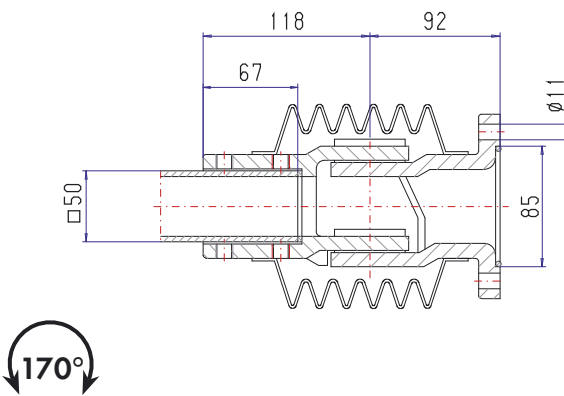


170°

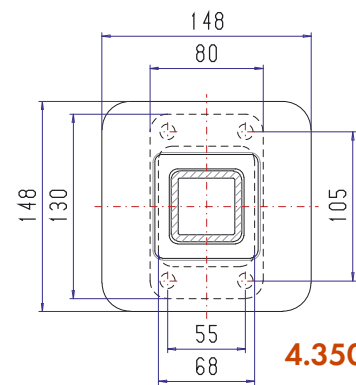
4.250 g

Wandgelenk
Wall joint
Wandscharnier

QUADRO 50



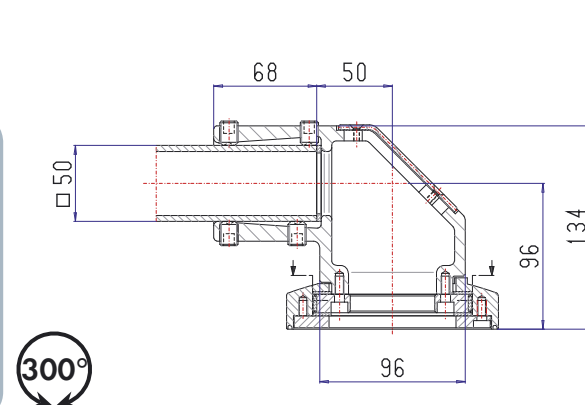
170°



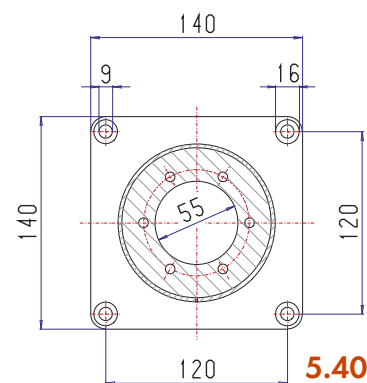
4.350 g

Aufsatzgelenk
Socket joint
Opzetscharnier

QUADRO 50



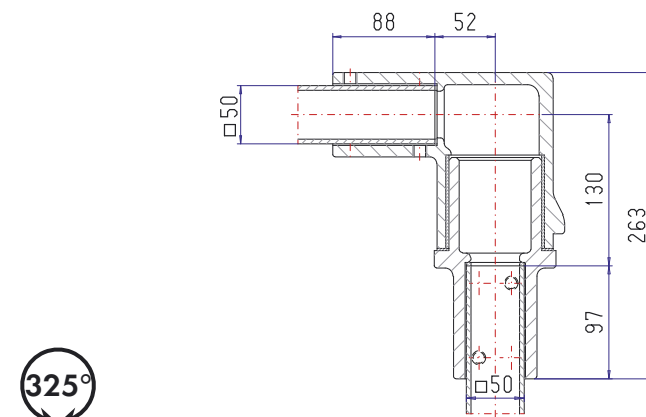
300°



5.400 g

Aufsteckgelenk
Tube rotation joint
Opsteekscharnier

QUADRO 50



325°

6.650 g

QUADRO

Tragarm-System
Suspension-system
Draagarmsysteem



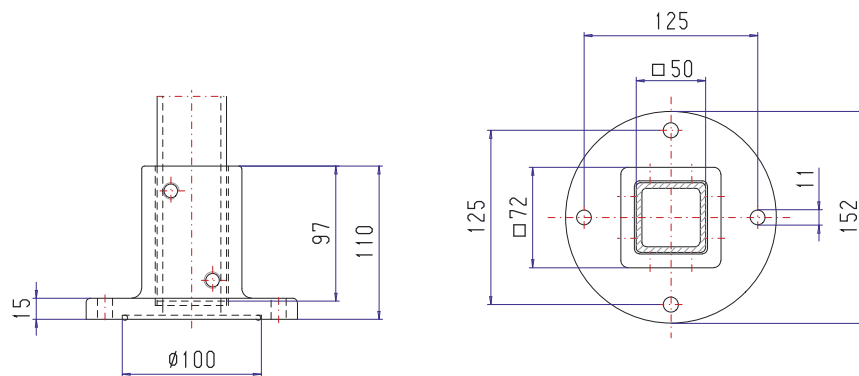
www.rolec.de

Standfuß
Base
Standvoet

QUADRO 50



9



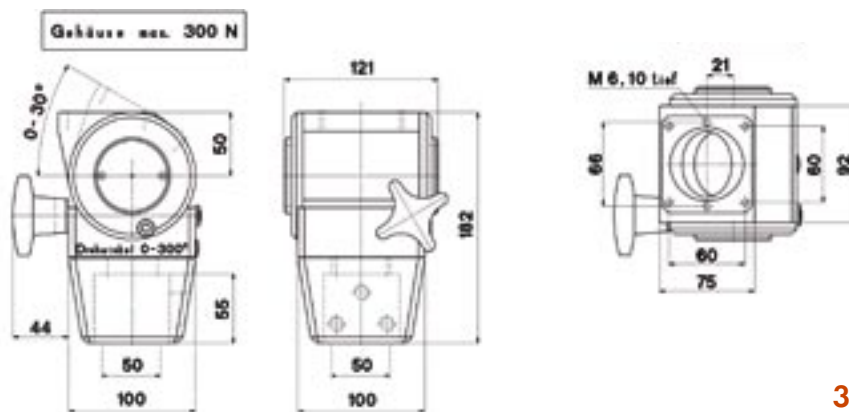
3.250 g

Neigungskupplung DN
Inclination coupling DN
Inclinatekoppeling DN

QUADRO 50



10



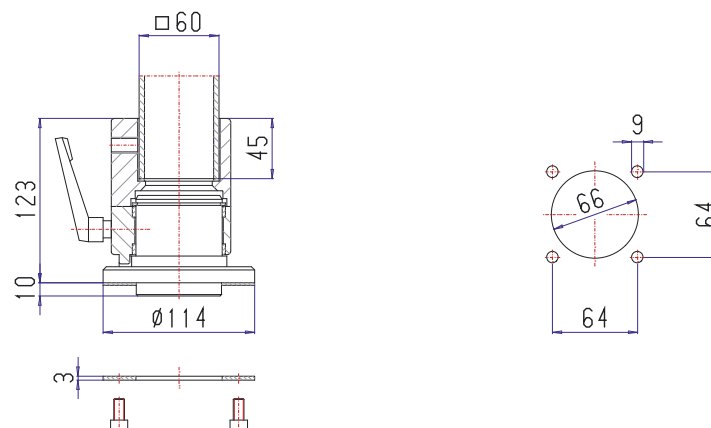
3.000 g

Gehäusekupplung
Enclosure coupling
Behuizingskoppeling

QUADRO 60



11



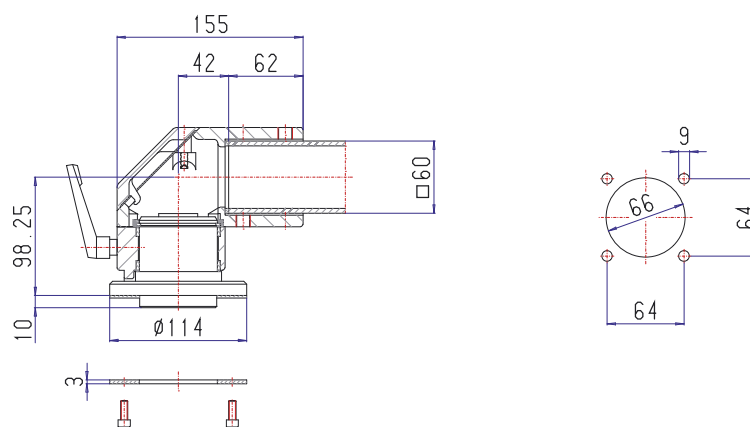
2.150 g

Winkelkupplung
Elbow coupling
Hoekkoppeling

QUADRO 60



12



3.850 g

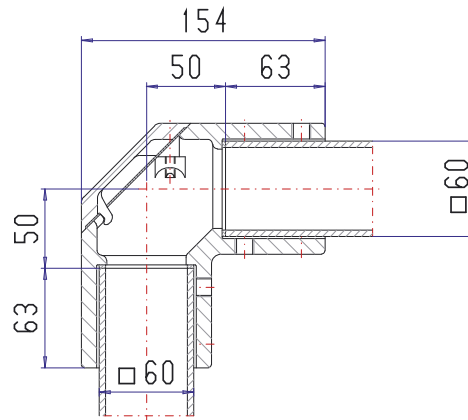


www.rolec.de

Winkel
Elbow
Hoek

QUADRO 60

13



3.850 g

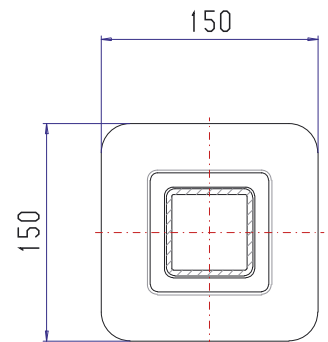
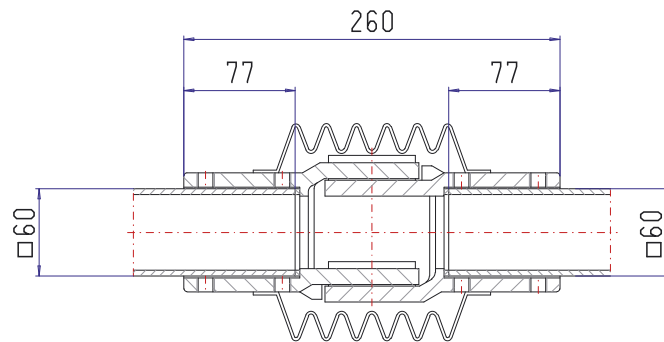
Zwischengelenk
Intermediate joint
Tussenscharnier

QUADRO 60

15



170°



5.550 g

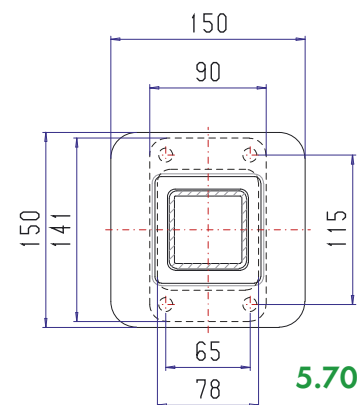
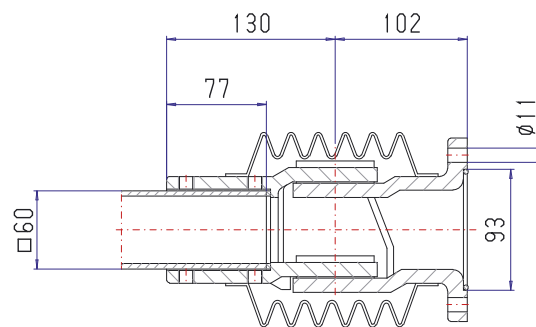
Wandgelenk
Wall joint
Wandscharnier

QUADRO 60

16



170°



5.700 g

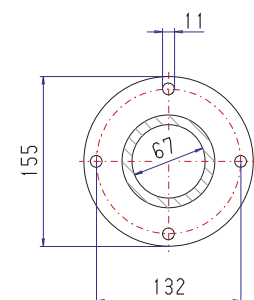
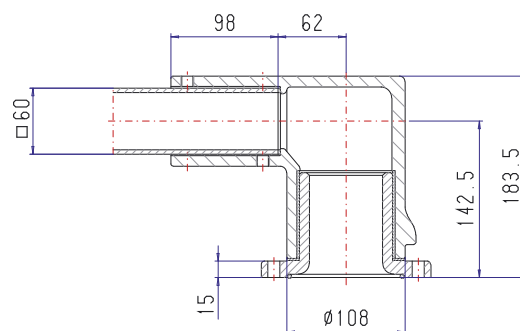
Aufsatzgelenk
Socket joint
Opzetscharnier

QUADRO 60

17



335°



9.300 g

QUADRO

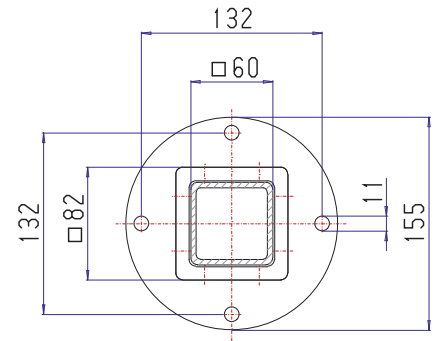
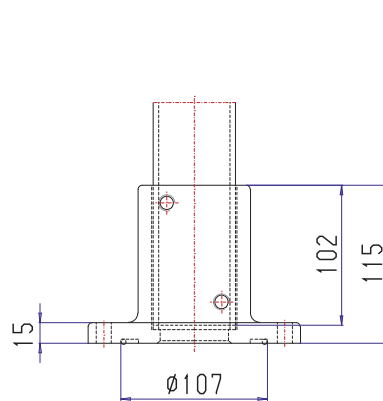


www.rolec.de

Tragarm-System
Suspension-system
Draagarmsysteem

Standfuß
Base
Standvoet

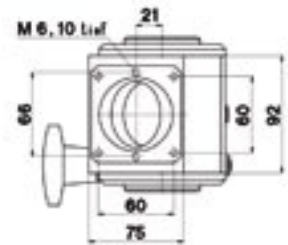
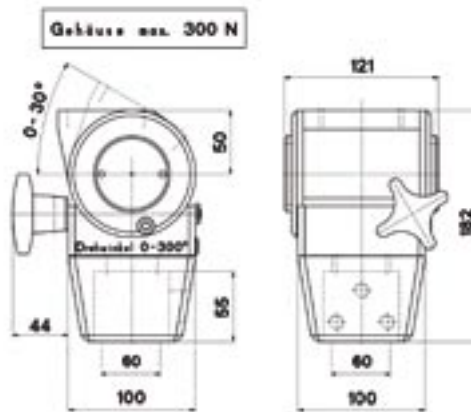
QUADRO 60



3.750 g

Neigungskupplung DN
Inclination coupling DN
Inclinatekoppeling DN

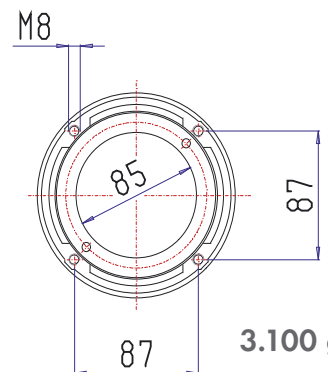
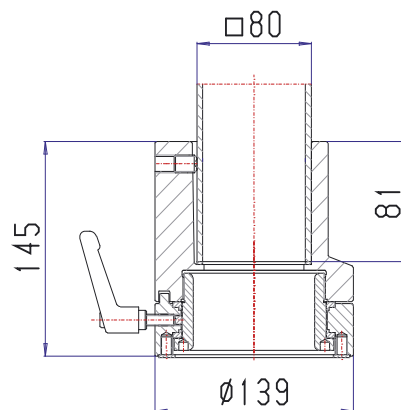
QUADRO 60



2.900 g

Gehäusekupplung
Enclosure coupling
Behuizingskoppeling

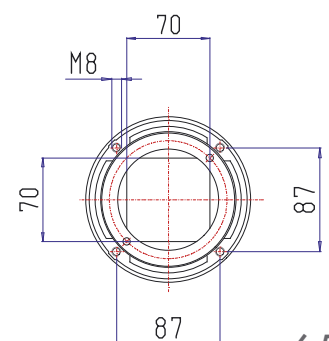
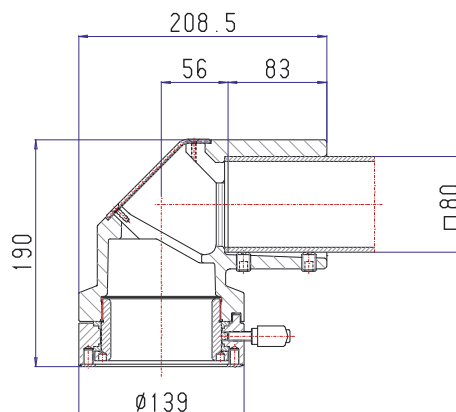
QUADRO 80



3.100 g

Winkelkupplung
Elbow coupling
Behuizingskoppeling

QUADRO 80



6.550 g

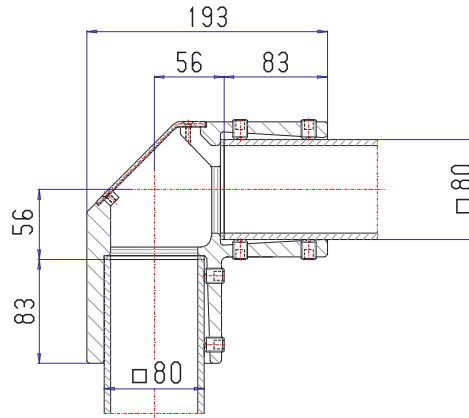


www.rolec.de

Winkel
Elbow
Hoek

QUADRO 80

23

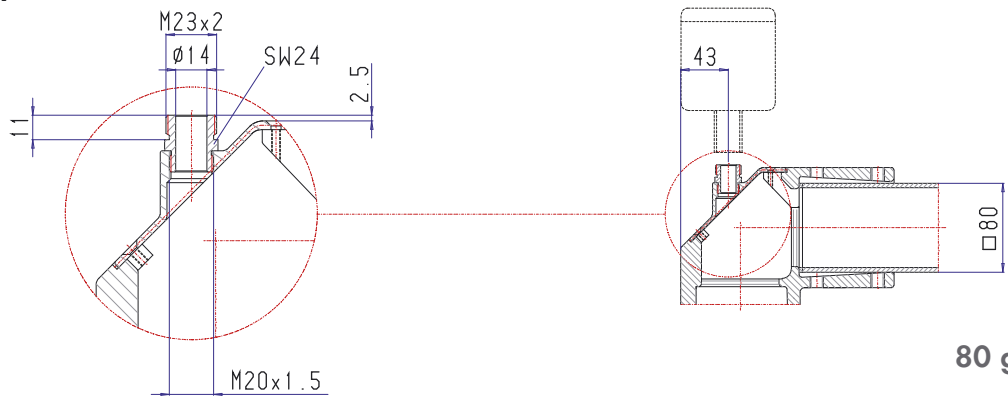


2.400 g

Kontrollleuchtenadapter
Control lamp adapter
Controlelampadapter

QUADRO 80

24

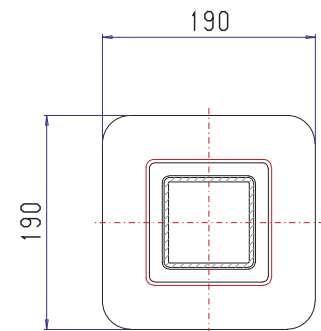
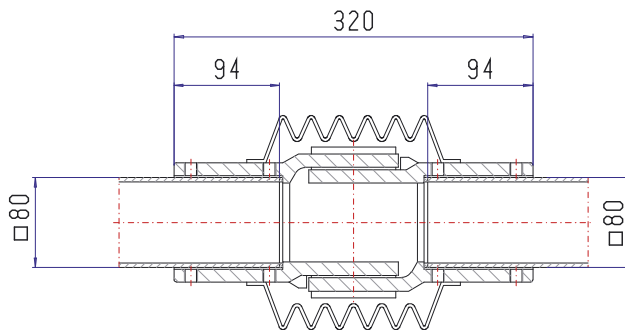


80 g

Zwischengelenk
Intermediate joint
Tussenscharnier

QUADRO 80

25



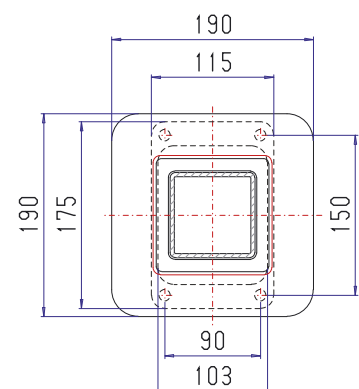
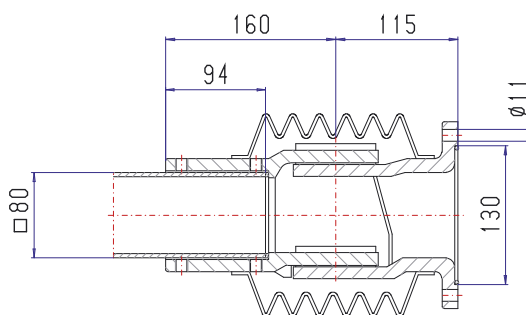
10.000 g

170°

Wandgelenk
Wall joint
Wandscharnier

QUADRO 80

26



9.450 g

170°

QUADRO



www.rolec.de

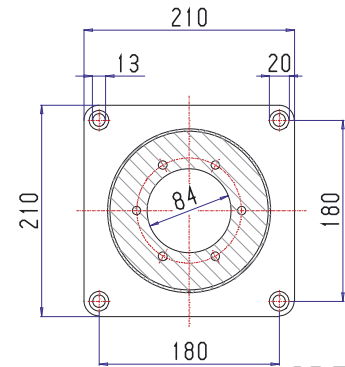
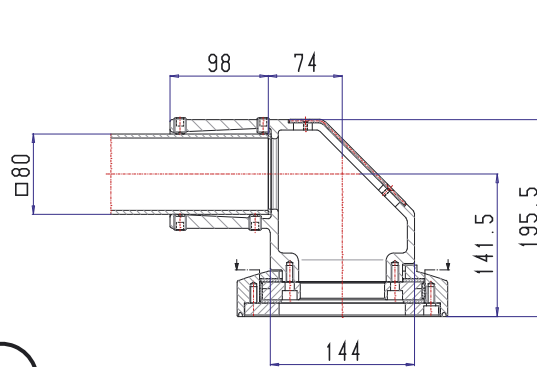
Tragarm-System
Suspension-system
Draagarmsysteem

Aufsatzgelenk
Socket joint
Opzetscharnier
QUADRO 80

27



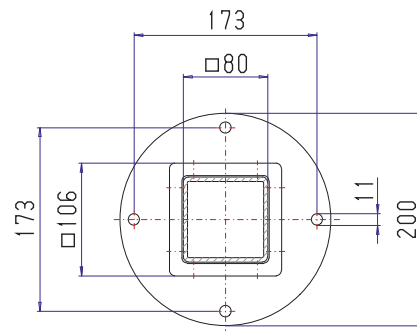
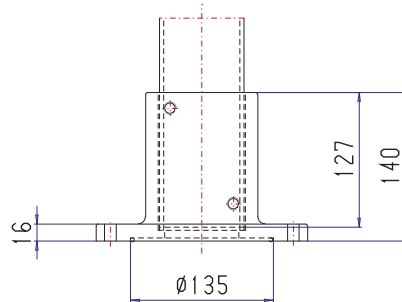
300°



15.700 g

Standfuß
Base
Standvoet
QUADRO 80

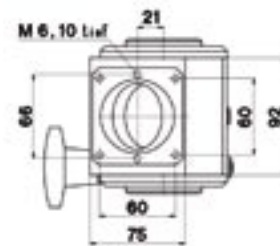
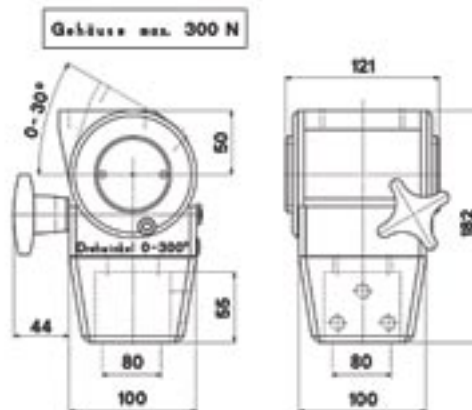
29



7.000 g

Neigungskupplung DN
Inclination coupling DN
Inclatieverbinding DN
QUADRO 80

30



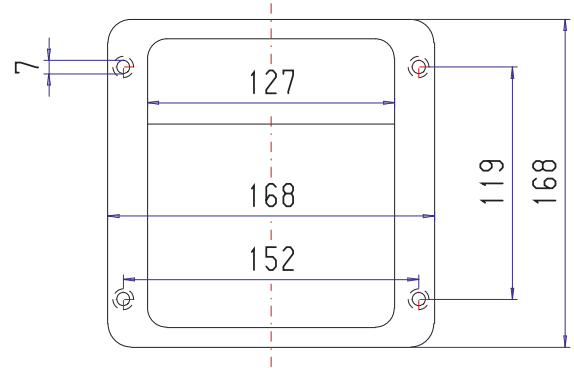
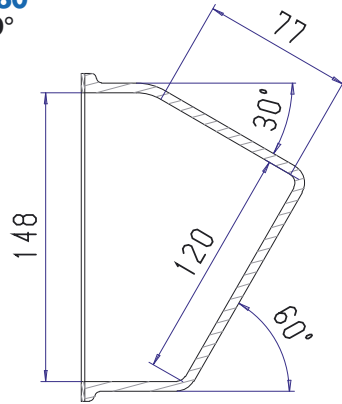
2.900 g



www.rolec.de

Neigungsadapter 30°/60°
Inclination adapter 30°/60°
Inclinatieadapter 30°/60°

QUADRO 50
QUADRO 60
QUADRO 80



1.100 g

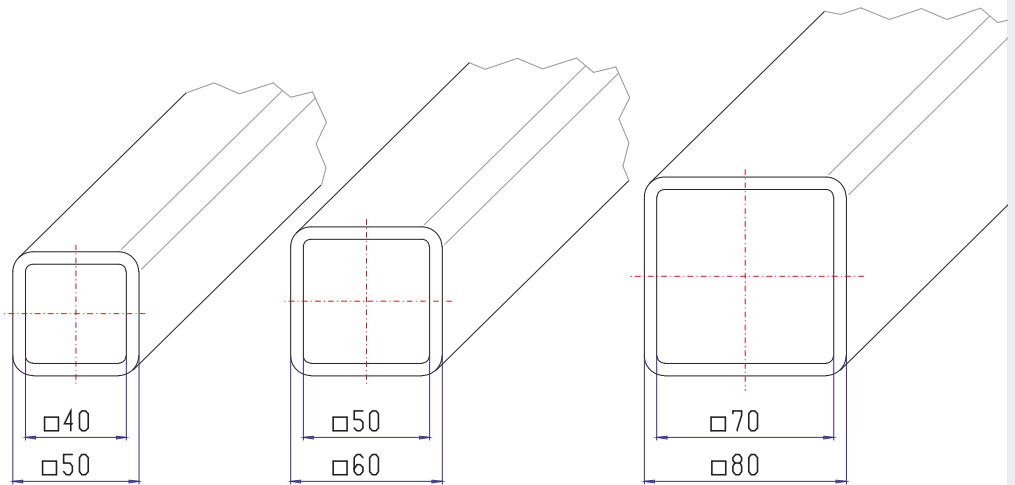
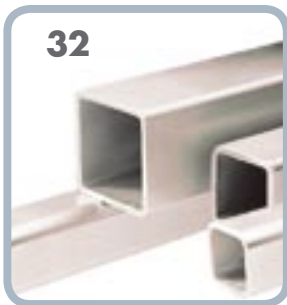
1.100 g

1.100 g



Vierkantrohr
Square tube
Vierkante buis

QUADRO 50
QUADRO 60
QUADRO 80



1,00m=6.750 g

1,00m=7.720 g

1,00m=10.480 g

